



Hydraulic podology chair

Range LUVIA
LUVIA14T-PODO

CARINA
Medical



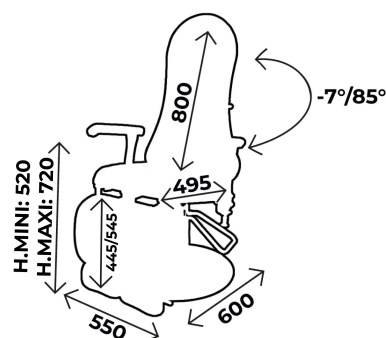
CE
ISO 9001
ISO 13485

TECHNICAL DETAILS

- 3 sections podology chair with hydraulic height adjustment
- Backrest and leg rests adjustments, with 3 independents gas jacks
- Length of the leg rests is adjustable easily with 2 mechanical buttons
- Trendelenburg position
- Ergonomic upholstery with good density: 35kg/cm³, M1 fire retardant class, thickness 7cm, specially developed for an optimal comfort of the patient
- Equipped with 2 armrests, that can be inclined for an easy access of the patient
- Plastic protection on seatrest
- Chromed base

DIMENSIONS

- Width 55cm
- Adjustable height from 55 to 74cm
- Load capacity: 130kg in dynamic
- Length of the legrest from 44,5 to 54,5cm



À NOTER

The LUVIA14T-PODO can be put in horizontal position



WHAT YOU NEED TO KNOW

- ✓ Delivery time: 15 days upon receipt of order
- ✓ Warranty: 2 years (1 year for the upholstery)

ACCESSORIES



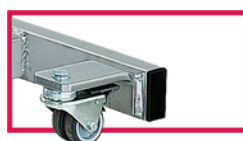
ACC514-LUVI-DOS
Plastic protection for backrest



ACC TETERGO-LUV
Ergonomic head rest for LUVIA range



ACC 993
4 retractable wheels, diam. 50mm



ACC 9505
Set of 4 wheels with brake, diam. 50mm

ZOOM LEGRESTS



UPHOLSTERY'S COLOURS

Fire retardant
upholstery, M1 class

*For the upholstery colours, you can choose between the Classic and Urban range
Be careful ! Urban colours with extra value*

Upholstery: Classic range



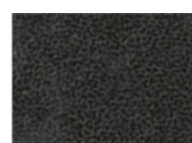
Arno



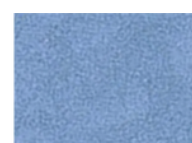
Garonne



Potomac



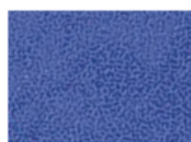
Amour



Mississippi



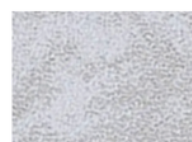
St Laurent



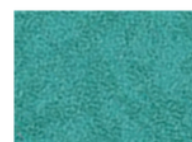
Rhône



Missouri



Seine

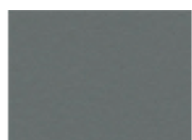


Amazon

Upholstery: Urban range



Abyss



Cendre



Origan



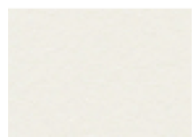
Géranium



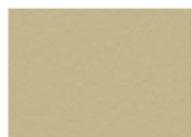
Régisse



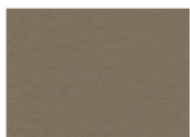
Prune



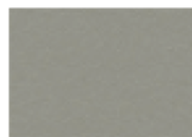
Perle



Ficelle



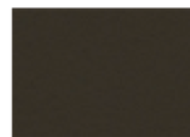
Terre



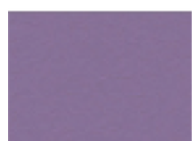
Béton



Chataigne



Chocolat



Pensée



Pétrole



Turquoise



Granny



Absinthe



Ananas



Orange



Fuschia



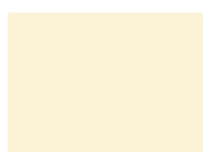
Tomate



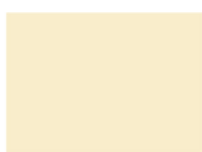
BASE COLOURS



RAL 9003



RAL 1013



RAL 1015



RAL 6019



RAL 6033



RAL 6000



RAL 5017



RAL 5002



RAL 5000



RAL 7035



RAL 7016



RAL 9005



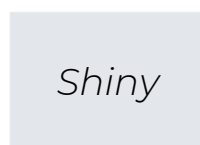
RAL 1018



RAL 3020



RAL 3003



SILVER



MAINTENANCE GUIDE

DAILY MAINTENANCE

Upholstery: Cleaning with soapy water only (no solvents), can be disinfected with products such as Phagosept Spray, Salvanios pH10 at 0.75% and Anios Surfaces Hautes, without abrasive material

Base: cleaning with soapy water only (no solvents) without abrasive materials

WARRANTY

Mechanical/ electrical part: 2 years

Upholstery: 1 year



CONTACT



Parc d'entreprises Visionis
278 rue de l'industrie
01090 GUÉREINS- FRANCE

COMMERCIAL SERVICE

Tel: +33(0)4 74 66 69 49
Fax: +33(0)4 74 66 69 50
export@carinamedical.com