



*Physiotherapy table*

***ECOMAX range***  
**ECOMAXKINE600**

**CARINA**  
*Medical*



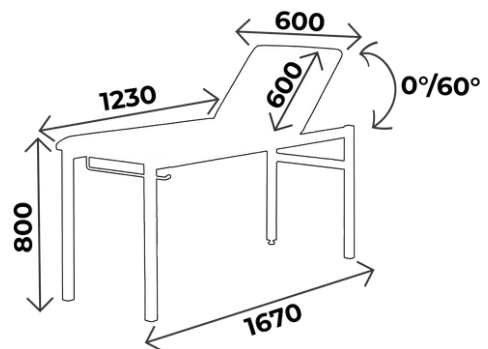
**CE**  
ISO 9001  
ISO 13485

## TECHNICAL DETAILS

- 2 sections physiotherapy table
- Adjustment of the head rest in every position with a gas jack
- Stretched upholstery with good density 24kg/cm<sup>2</sup>, M2 fire retardant class, thickness 6 cm
- Equipped with paper roll holder: possibility to fix it on foot or head side
- Full welded table: Very resistant
- Epoxy covered base, silver color in standard

## DIMENSIONS

- Width: 600mm
- Height: 800mm
- Load capacity: 150kg



### You may also like :

Réf. ECOMAXKINE700 : Same as ECOMAXKINE600 but width 700mm



### WHAT YOU NEED TO KNOW

- ✓ Delivery time: 15 days upon receipt of order
- ✓ Warranty: 2 years (1 year for the upholstery)

## ACCESSORIES

## CUSHIONS



### COUSSIN-001

Rectangular cushion with HR foam  
dim. 440x200x75mm



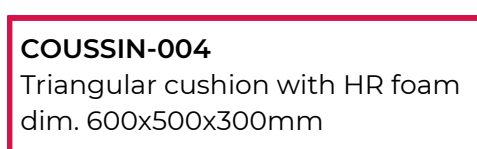
### COUSSIN-002

Half cylindric cushion HR foam,  
dim 450x120mm, radius 120mm



### COUSSIN-003

Cylindric cushion with HR foam  
dim. 500x160mm



### COUSSIN-004

Triangular cushion with HR foam  
dim. 600x500x300mm

# UPHOLSTERY'S COLOURS

Fire retardant  
upholstery, M2 class

For the upholstery colours, you can choose between the Ecomax, Classic and Urban range  
Be careful ! Classic and Urban colours **with extra value**

## Upholstery: ECOMAX\* range



**Galapagos**



**Bahamas**



**Blanc**



**Tahiti**



**Malouines**

*\*Standard colors for ECOMAX, SIMPLEX and PRISCA ranges,  
Classic and Urban colors available on demand*

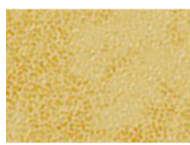


# UPHOLSTERY'S COLOURS

Fire retardant  
upholstery, M1 class

For the upholstery colours, you can choose between the Classic and Urban range  
Be careful ! Classic and Urban colours **with extra value**

## Upholstery: Classic range



**Arno**



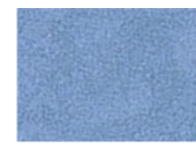
**Garonne**



**Potomac**



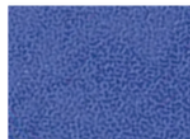
**Amour**



**Mississippi**



**St Laurent**



**Rhône**



**Missouri**



**Seine**

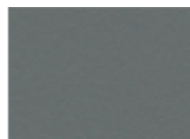


**Amazone**

## Upholstery: Urban range



**Abysses**



**Cendre**



**Origan**



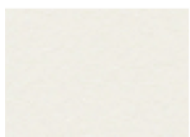
**Géranium**



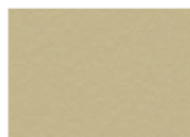
**Régilisse**



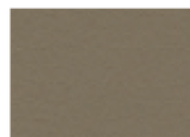
**Prune**



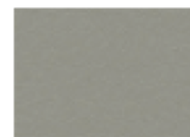
**Perle**



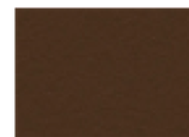
**Ficelle**



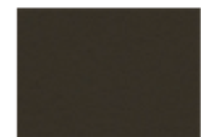
**Terre**



**Béton**



**Chataigne**



**Chocolat**



**Pensée**



**Pétrole**



**Turquoise**



**Granny**



**Absinthe**



**Ananas**



**Orange**



**Fuschia**



**Tomate**



# MAINTENANCE GUIDE

## **DAILY MAINTENANCE**

Upholstery: Cleaning with soapy water only (no solvents), can be disinfected with products such as Phagosept Spray, Salvaniol pH10 at 0.75% and Anios Surfaces Hautes, without abrasive material

Base: cleaning with soapy water only (no solvents) without abrasive materials

## **WARRANTY**

Mechanical/ electrical part: 2 years

Upholstery: 1 year



CONTACT

CARINA  
*Médical*

Parc d'entreprises Visionis  
278 rue de l'industrie  
01090 GUÉREINS- FRANCE

**COMMERCIAL SERVICE**

Tel: +33(0)4 74 66 69 49  
Fax: +33(0)4 74 66 69 50  
[export@carinamedical.com](mailto:export@carinamedical.com)