



*Physiotherapy table*

**BOBATH range**

**BOBATH**

**CARINA**  
*Medical*



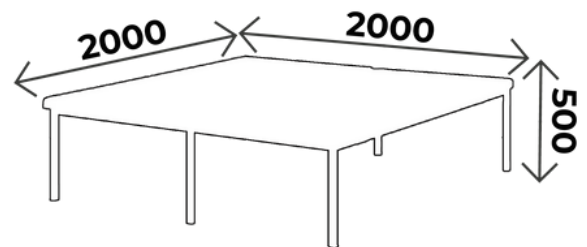
**CE**  
ISO 9001  
ISO 13485

## TECHNICAL DETAILS

- 2 sections physiotherapy table
- Stretched upholstery, M1 fire retardant class, thickness 4 cm
- Epoxy covered base, light grey color (RAL7035) in standard

## DIMENSIONS

- Width: 2000mm
- Length: 2000mm
- Height: 500mm
- Load capacity: 150kg



### You may also like :

Réf. BOBATH2 : Same as BOBATH but width 1000mm



### WHAT YOU NEED TO KNOW

- ✓ Delivery time: 15 days upon receipt of order
- ✓ Warranty: 2 years (1 year for the upholstery)

## ACCESSORIES

## CUSHIONS



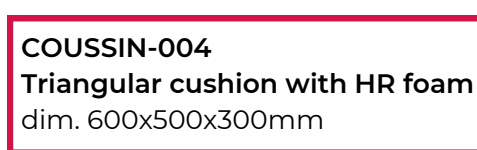
**COUSSIN-001**  
Rectangular cushion with HR foam  
dim. 440x200x75mm



**COUSSIN-002**  
Half cylindric cushion HR foam,  
dim 450x120mm, radius 120mm



**COUSSIN-003**  
Cylindric cushion with HR foam  
dim. 500x160mm



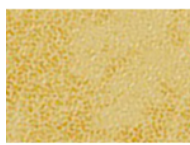
**COUSSIN-004**  
Triangular cushion with HR foam  
dim. 600x500x300mm

# UPHOLSTERY'S COLOURS

Fire retardant  
upholstery, M1 class

*For the upholstery colours, you can choose between the Classic and Urban range  
Be careful ! Urban colours with extra value*

## *Upholstery: Classic range*



**Arno**



**Garonne**



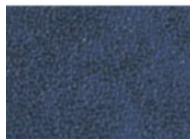
**Potomac**



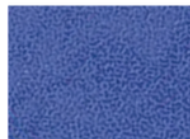
**Amour**



**Mississippi**



**St Laurent**



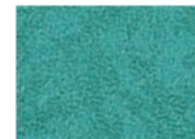
**Rhône**



**Missouri**



**Seine**

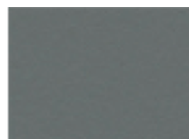


**Amazone**

## *Upholstery: Urban range*



**Abysses**



**Cendre**



**Origan**



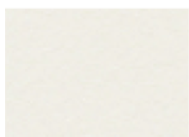
**Géranium**



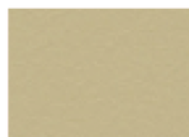
**Réglice**



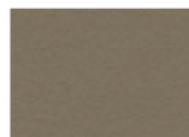
**Prune**



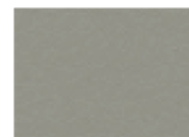
**Perle**



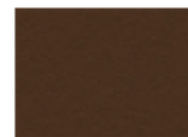
**Ficelle**



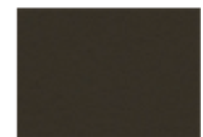
**Terre**



**Béton**



**Chataigne**



**Chocolat**



**Pensée**



**Pétrole**



**Turquoise**



**Granny**



**Absinthe**



**Ananas**



**Orange**



**Fuschia**



**Tomate**



## BASE COLOURS

*All the BOBATH range have a base grey in standard  
Possibility to change without extra value*



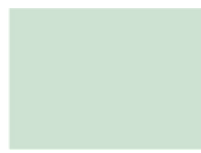
**RAL 9003**



**RAL 1013**



**RAL 1015**



**RAL 6019**



**RAL 6033**



**RAL 6000**



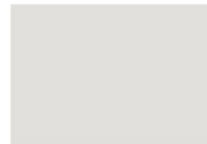
**RAL 5017**



**RAL 5002**



**RAL 5000**



**RAL 7035**



**RAL 7016**



**RAL 9005**



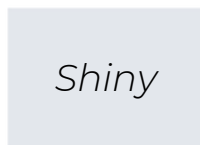
**RAL 1018**



**RAL 3020**



**RAL 3003**



*Shiny*

**SILVER**



# MAINTENANCE GUIDE

## **DAILY MAINTENANCE**

Upholstery: Cleaning with soapy water only (no solvents), can be disinfected with products such as Phagosept Spray, Salvaniol pH10 at 0.75% and Anios Surfaces Hautes, without abrasive material

Base: cleaning with soapy water only (no solvents) without abrasive materials

## **WARRANTY**

Mechanical/ electrical part: 2 years

Upholstery: 1 year



CONTACT

CARINA  
*Médical*

Parc d'entreprises Visionis  
278 rue de l'industrie  
01090 GUÉREINS- FRANCE

**COMMERCIAL SERVICE**

Tel: +33(0)4 74 66 69 49  
Fax: +33(0)4 74 66 69 50  
[export@carinamedical.com](mailto:export@carinamedical.com)