



*Photo of the model with all around controller and retractable wheels (Ref. 99906)*

*Electric examination couch*  
**999 range**  
**999 01**

**CARINA**  
*Medical*



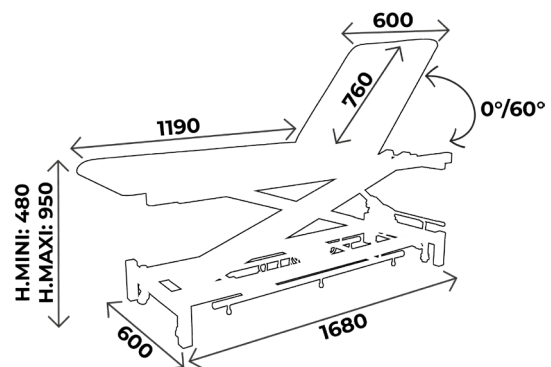
**CE**  
ISO 9001  
ISO 13485

## TECHNICAL DETAILS

- 2 sections examination couch, width 60cm
- Control : Hand remote
- Backrest adjustment in every positions with gas jack
- Flat upholstery with good density 40kg/cm<sup>2</sup>, M2 fire retardant class, thickness 7cm
- Frame composed of a 600N electric jack
- Equipped with paper roll holder for exam sheet, on the foot side
- Epoxy covering, silver colour
- On 4 skids

## DIMENSIONS

- Width 60cm
- Adjustable height from 48 to 95cm
- Load capacity : 150kg in dynamic



### You may also like :

Ref. **99902** : Same as 99901 but pedal control

Ref. **99903** : Same as 99901 but all around controller

Ref. **99904** : Same as 99901 but on 4 retractable wheels

Ref. **99905** : Same as 99901 but pedal control, on 4 retractable wheels

Ref. **99906** : Same as 99901 but all around controller, on 4 retractable wheels



## WHAT YOU NEED TO KNOW

- ✓ Delivery time: 15 days upon receipt of order
- ✓ Warranty : 2 years (1 year for the upholstery)

## ACCESSORIES



**ACC 538**  
Pair of clamps diam. 14mm  
width 60cm



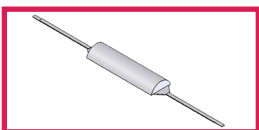
**ACC 964**  
Pair of legrests on knee system  
in black polyurethane  
diam. 14mm, without clamp



**ACC 76C**  
Unit clamp to fix infusion stand  
diam. 16mm



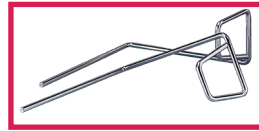
**ACC 110**  
Blood test splint in colour  
without clamp, the unit



**ACC 54001**  
Half moon head rest width  
60cm fire retardant M1 class



**ACC 514-UNIVERSE**  
Plastic protection cover  
for all couches



**ACC 105**  
Pair of stainless steel  
stirrups diam. 14mm,  
without clamp



**SLFEMIREPOSE**  
Cover for legrests (ACC964)  
in upholstery, the unit



**ACC 32012**  
Stainless steel infusion stand  
diam. 16mm, 2 plastic hooks,  
without clamp



**ACC 110POLY**  
Polyurethane blood test splint  
without clamp, the unit



**ACC TETERGO**  
Ergonomic head rest



**ACC 832**  
Face hole with plug cushion

## UPHOLSTERY'S COLOURS

Fire retardant  
upholstery, M2 class

For the upholstery colours, you can choose between the Ecomax, Classic and Urban range  
Be careful ! Classic and Urban colours **with extra value**

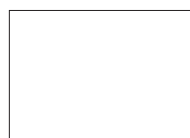
### *Upholstery : ECOMAX\* range*



Galapagos



Bahamas



Blanc



Tahiti



Malouines

\*Standard colors for ECOMAX, SIMPLEX and 999 range,  
Classic and Urban colors available **on demand**

# UPHOLSTERY'S COLOURS

Fire retardant  
upholstery, M1 class

For the upholstery colours, you can choose between the Classic and Urban range  
Be careful ! Classic and Urban colours **with extra value**

## *Upholstery : Classic range*



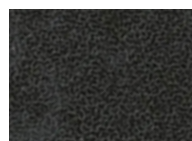
Arno



Garonne



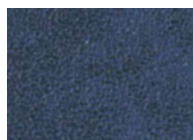
Potomac



Amour



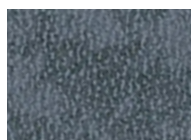
Mississippi



St Laurent



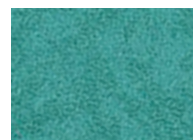
Rhône



Missouri



Seine



Amazone

## *Upholstery : Urban range*



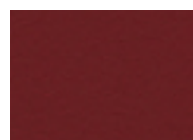
Abysses



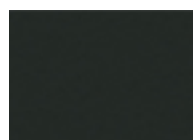
Cendre



Origan



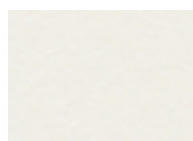
Géranium



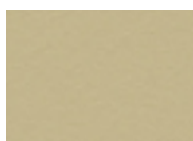
Régisse



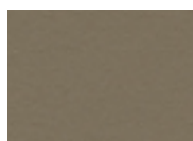
Prune



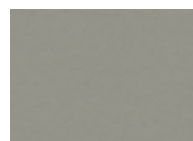
Perle



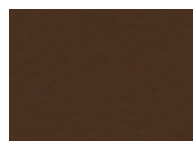
Ficelle



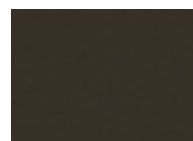
Terre



Béton



Chataigne



Chocolat



Pensée



Pétrole



Turquoise



Granny



Absinthe



Ananas



Orange



Fuschia



Tomate



## MAINTENANCE GUIDE

### **DAILY MAINTENANCE**

Upholstery : Cleaning with soapy water only (no solvents), can be disinfected with products such as Phagosept Spray, Salvanios pH10 at 0.75% and Anios Surfaces Hautes, without abrasive material

Base : cleaning with soapy water only (no solvents) without abrasive materials

### **WARRANTY**

Mechanical/ electrical part : 2 years

Upholstery : 1 year



**CONTACT**



Parc d'entreprises Visionis  
278 rue de l'industrie  
01090 GUÉREINS- FRANCE

**COMMERCIAL DEPARTMENT**

Tél : +33(0)4 74 66 69 49  
Fax : +33(0)4 74 66 69 50  
[export@carinamedical.com](mailto:export@carinamedical.com)