



*Fixed Height ENT chair*

**Range 512**  
**51277T-ORL**

**CARINA**  
*Medical*



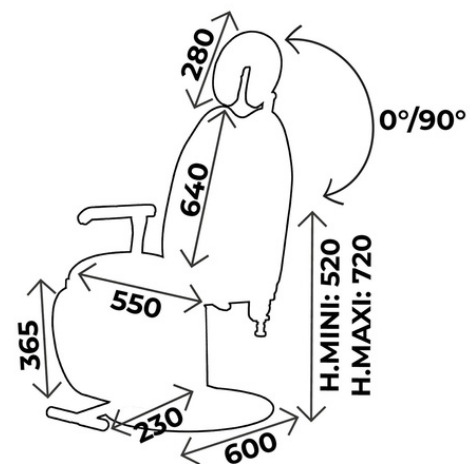
**CE**  
ISO 9001  
ISO 13485

## TECHNICAL DETAILS

- 3 sections ENT chair with fixed height
- Synchronised backrest and legrest adjustment, with gas jack
- Adjustable head rest specially developed for ENT exams
- Trendelenburg position
- Ergonomic upholstery with good density 30kg/cm<sup>3</sup>, M1 fire retardant class, thickness 8cm ( specially developed for an optimal comfort of the patient, with a lumbar support )
- Equipped with 2 removable armrests
- Chromed base

## DIMENSIONS

- Width 55cm
- Height 50cm
- Load capacity: 130kg



Adjustable head rest  
specially developed for  
ENT exams



## ACCESSORIES



**ACC514-ASSISE**  
**ACC514-JAMBIÈRE**  
Plastic protection for seatrest or legrest



### WHAT YOU NEED TO KNOW

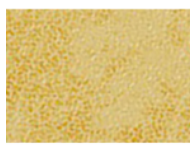
- ✓ Delivery time: 15 days upon receipt of order
- ✓ Warranty: 2 years (1 year for the upholstery)

# UPHOLSTERY'S COLOURS

Fire retardant  
upholstery, M1 class

*For the upholstery colours, you can choose between the Classic and Urban range  
Be careful ! Urban colours with extra value*

## *Upholstery: Classic range*



**Arno**



**Garonne**



**Potomac**



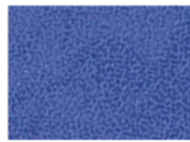
**Amour**



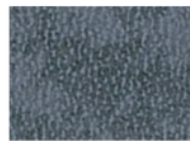
**Mississippi**



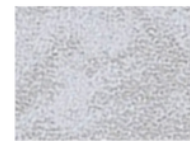
**St Laurent**



**Rhône**



**Missouri**



**Seine**

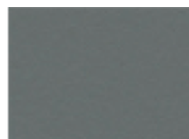


**Amazone**

## *Upholstery: Urban range*



**Abysses**



**Cendre**



**Origan**



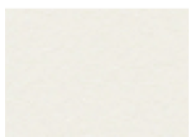
**Géranium**



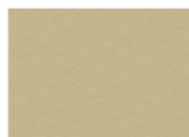
**Réglisse**



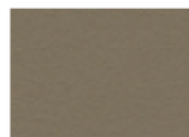
**Prune**



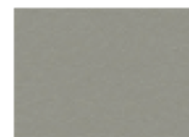
**Perle**



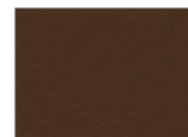
**Ficelle**



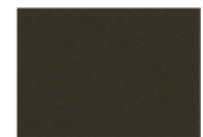
**Terre**



**Béton**



**Chataigne**



**Chocolat**



**Pensée**



**Pétrole**



**Turquoise**



**Granny**



**Absinthe**



**Ananas**



**Orange**



**Fuschia**



**Tomate**



**BASE  
COLOURS**



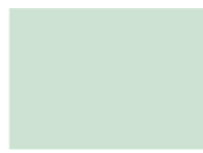
**RAL 9003**



**RAL 1013**



**RAL 1015**



**RAL 6019**



**RAL 6033**



**RAL 6000**



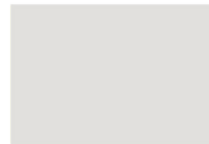
**RAL 5017**



**RAL 5002**



**RAL 5000**



**RAL 7035**



**RAL 7016**



**RAL 9005**



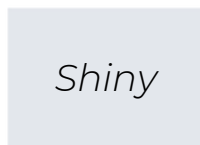
**RAL 1018**



**RAL 3020**



**RAL 3003**



**SILVER**



# MAINTENANCE GUIDE

## **DAILY MAINTENANCE**

Upholstery: Cleaning with soapy water only (no solvents), can be disinfected with products such as Phagosept Spray, Salvaniol pH10 at 0.75% and Anios Surfaces Hautes, without abrasive material

Base: cleaning with soapy water only (no solvents) without abrasive materials

## **WARRANTY**

Mechanical/ electrical part: 2 years

Upholstery: 1 year



CONTACT

CARINA  
*Médical*

Parc d'entreprises Visionis  
278 rue de l'industrie  
01090 GUÉREINS- FRANCE

**COMMERCIAL SERVICE**

Tel: +33(0)4 74 66 69 49  
Fax: +33(0)4 74 66 69 50  
[export@carinamedical.com](mailto:export@carinamedical.com)