



*Fixed height sampling chair*

**PRELIA range**

**PRELIA08**

**CARINA**  
*Medical*



**CE**  
ISO 9001  
ISO 13485

## TECHNICAL DETAILS

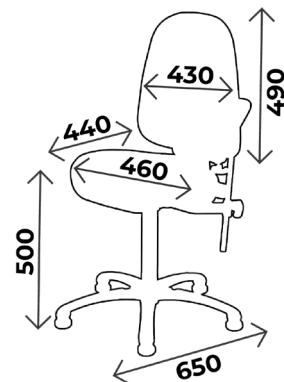
- 2 sections sampling chair with fixed height 50cm
- Adjustment of the flexibility of the backrest
- Ergonomic upholstery, M1 fire retardant class, thickness 6cm.

### Very good lumbar support

- Equipped with a blood test splint, M1 class, fire retardant, adjustable in any position by serrated blocks system
- 5 aluminium branches base diam. 65 cm on skids

## DIMENSIONS

- Width 46cm
- Height 50cm
- Load capacity : 150kg



## ACCESSORIES



**ACC 110POLY**  
Polyurethane blood test splint without clamp, the unit



**ACC 110**  
Blood test splint in colour without clamp, the unit



**ACC 537-PRELI-UN**  
Pair of clamps diam. 14mm for blood test splints and stirrups for PRELIA range

### You may also like :

Ref. **PRELIA07** : Same as PRELIA08 but equipped with a blood test splint in black polyurethane



## WHAT YOU NEED TO KNOW

- ✓ Delivery time: 15 days upon receipt of order
- ✓ Warranty : 2 years (1 year for the upholstery)

# UPHOLSTERY'S COLOURS

Fire retardant  
upholstery, M1 class

For the upholstery colours, you can choose between the Classic and Urban range  
Be careful ! Urban colours without extra value

## *Upholstery : Classic range*



Arno



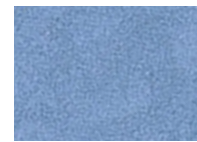
Garonne



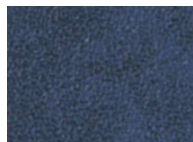
Potomac



Amour



Mississippi



St Laurent



Rhône



Missouri



Seine



Amazone



Discover the Urban range on the  
following page

# UPHOLSTERY'S COLOURS

Fire retardant  
upholstery, M1 class

*Discover the upholstery colors of the Urban range*



*Upholstery : Urban range*





# MAINTENANCE GUIDE

## **DAILY MAINTENANCE**

Upholstery : Cleaning with soapy water only (no solvents), can be disinfected with products such as Phagosept Spray, Salvanios pH10 at 0.75% and Anios Surfaces Hautes, without abrasive material

Base : cleaning with soapy water only (no solvents) without abrasive materials

## **WARRANTY**

Mechanical/ electrical part : 2 years

Upholstery : 1 year



**CONTACT**

**CARINA**  
*Médical*

Parc d'entreprises Visionis  
278 rue de l'industrie  
01090 GUÉREINS- FRANCE

**COMMERCIAL DEPARTMENT**

Tél : +33(0)4 74 66 69 49  
Fax : +33(0)4 74 66 69 50  
[export@carinamedical.com](mailto:export@carinamedical.com)