



*Hydraulic sampling chair*

*LUVIA range*

**LUVIA14TSJ**

**CARINA**  
*Medical*



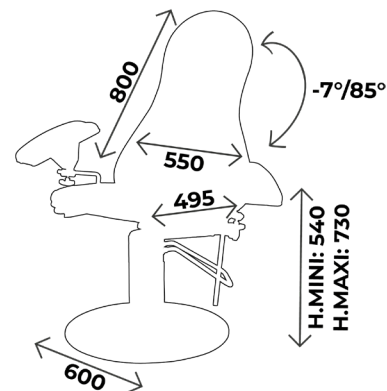
**CE**  
ISO 9001  
ISO 13485

## TECHNICAL DETAILS

- 2 sections (without legrest) hydraulic sampling chair, 360° rotating (possibility to block the rotation)
- Backrest adjustment in every positions with gas jack
- Trendelenburg position
- Ergonomic upholstery with good density 35kg/cm<sup>2</sup>, M1 fire retardant class, thickness 7cm. Specially developed for optimal patient comfort
- Equipped with 2 blood test splints, adjustable in every positions with serrated blocks system
- Plastic protection on seat as standard
- Chromed base

## DIMENSIONS

- Width 55cm
- Adjustable height from 54cm to 73cm
- Load capacity : 130kg in dynamic



## OTHER ELEMENTS

All our chairs can be put in **lying position**

### You may also like :

Ref. **LUVIA14T** : Same as LUVIA14TSJ but with legrest



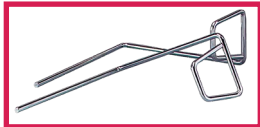
## WHAT YOU NEED TO KNOW

- ✓ Delivery time: 15 days upon receipt of order
- ✓ Warranty : 2 years (1 year for the upholstery)

# ACCESSORIES



**ACC 537LUVIA**  
Pair of clamps diam. 14mm for blood test splints and stirrups for LUVIA range



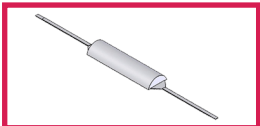
**ACC 105**  
Pair of stainless steel stirrups diam. 14mm, without clamp



**SLFEMIREPOSE**  
Cover for legrests (ACC964) in upholstery, the unit



**ACC514-LUVI-ASS**  
Plastic protection for seatrest



**ACC 54005**  
Half moon head rest width 55cm fire retardant M1 class



**ACC 910-PLAT04**  
Plastic tray 350x270 with clamp



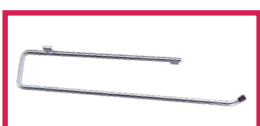
**ACC 113U-105**  
Pair of handles with clamps to fix both handles and stirrups



**ACC 32012**  
Stainless steel infusion stand diam. 16mm, 2 plastic hooks, without clamp



**ACC 110**  
Blood test splint in colour without clamp, the unit



**ACC 125**  
Paper holder for all models



**ACC 535**  
Pair of double clamps diam. 14mm and diam.16mm to fix both armrest and infusion stand



**ACC 964**  
Pair of legrests on knee system in black polyurethane diam. 14mm, without clamp



**ACC 514-GOUT**  
Plastic protection for blood test splint, the unit



**ACC514-LUVI-DOS**  
Plastic protection for backrest



**ACC 910-PLAT02**  
Stainless steel tray 340x340 with clamp



**ACC 113U**  
Pair of handles without clamp with U shape



**ACC TETERGO-LUV**  
Tête ergonomique amovible pour gamme LUVIA



**ACC 32014**  
Stainless steel infusion stand diam. 16mm, 2 stainless steel hooks without clamp



**ACC 110POLY**  
Polyurethane blood test splint without clamp, the unit

# UPHOLSTERY'S COLOURS

Fire retardant upholstery, M1 class

For the upholstery colours, you can choose between the Classic and Urban range  
Be careful ! Urban colours **with extra value**

## *Upholstery : Classic range*



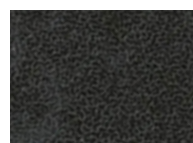
Arno



Garonne



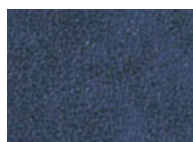
Potomac



Amour



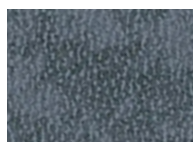
Mississippi



St Laurent



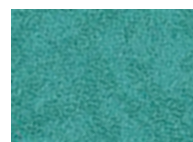
Rhône



Missouri



Seine



Amazone

## *Upholstery : Urban range*



Abysses



Cendre



Origan



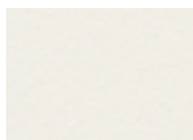
Géranium



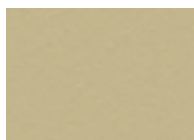
Réglisse



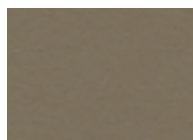
Prune



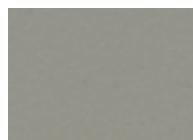
Perle



Ficelle



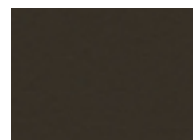
Terre



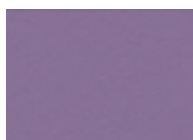
Béton



Chataigne



Chocolat



Pensée



Pétrole



Turquoise



Granny



Absinthe



Ananas



Orange



Fuschia



Tomate



# MAINTENANCE GUIDE

## **DAILY MAINTENANCE**

Upholstery : Cleaning with soapy water only (no solvents), can be disinfected with products such as Phagosept Spray, Salvanios pH10 at 0.75% and Anios Surfaces Hautes, without abrasive material

Base : cleaning with soapy water only (no solvents) without abrasive materials

## **WARRANTY**

Mechanical/ electrical part : 2 years

Upholstery : 1 year

**CONTACT**

**CARINA**  
*Médical*

Parc d'entreprises Visionis  
278 rue de l'industrie  
01090 GUÉREINS- FRANCE

**COMMERCIAL DEPARTMENT**

Tél : +33(0)4 74 66 69 49  
Fax : +33(0)4 74 66 69 50  
[export@carinamedical.com](mailto:export@carinamedical.com)